

Development Site Available

1.10 Acres

125-131 Main Street | Norwalk, Connecticut
2 & 4 West Main Street



2014 Demographics

1 Mile

3 Miles

5 Miles

Estimated Population	20,859	90,182	142,138
Estimated Households	8,331	34,750	53,520
Average Household Income	\$84,731	\$102,937	\$131,842

Traffic Count 11,800 cars per day

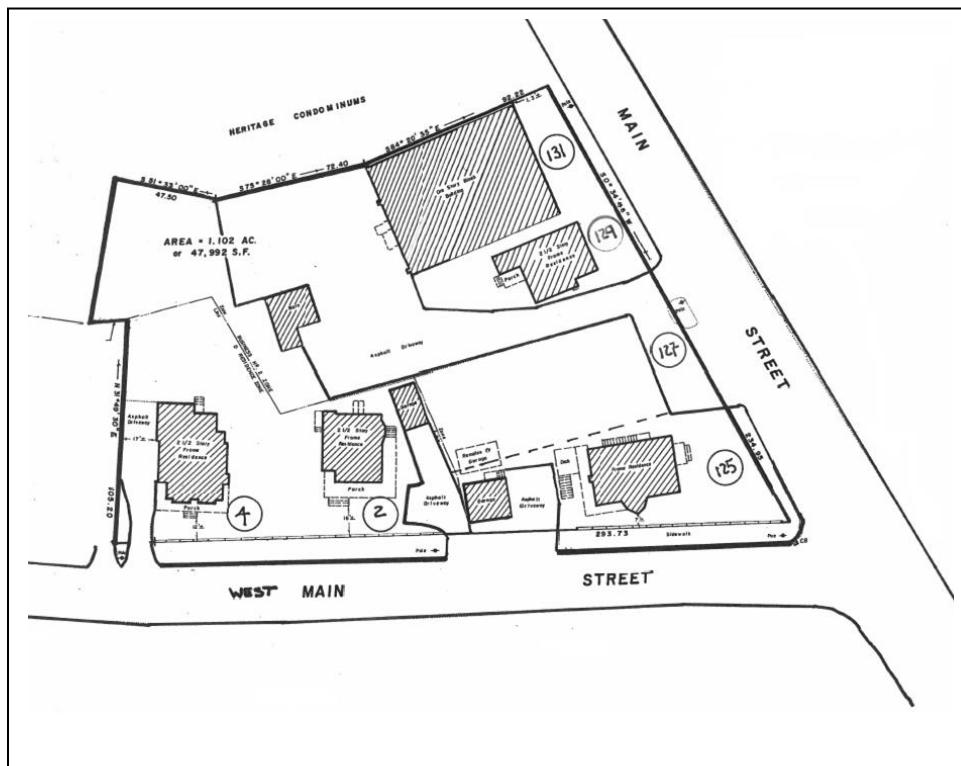
One Selleck Street | Norwalk, CT 06855
P 203.307.0785
www.thesouthpointgroup.com

THE
SOUTHPOINT
GROUP COMMERCIAL
REAL ESTATE

MORE DETAILS

Property Highlights

- Zoning: B2 and D
- Property: 1.10 acres in total
- Currently there are four residences (fully leased month to month, and 4,200 sq. ft. block building (plus a full basement)
- Located off of busy US Route 1 with easy access to I-95, Route 7 Connector and Merritt Parkway
- Offering Price: \$2,000,000



For additional information or to request a showing please call the Exclusive Agents
David Flayhan: 203-858-2437 dflayhan@thesouthpointgroup.com

One Selleck Street | Norwalk, CT 06855
P 203.307.0785
www.thesouthpointgroup.com

THE
SOUTHPOINT
GROUP COMMERCIAL
REAL ESTATE